



**Hounslow and Richmond
Community Healthcare**

NHS Trust



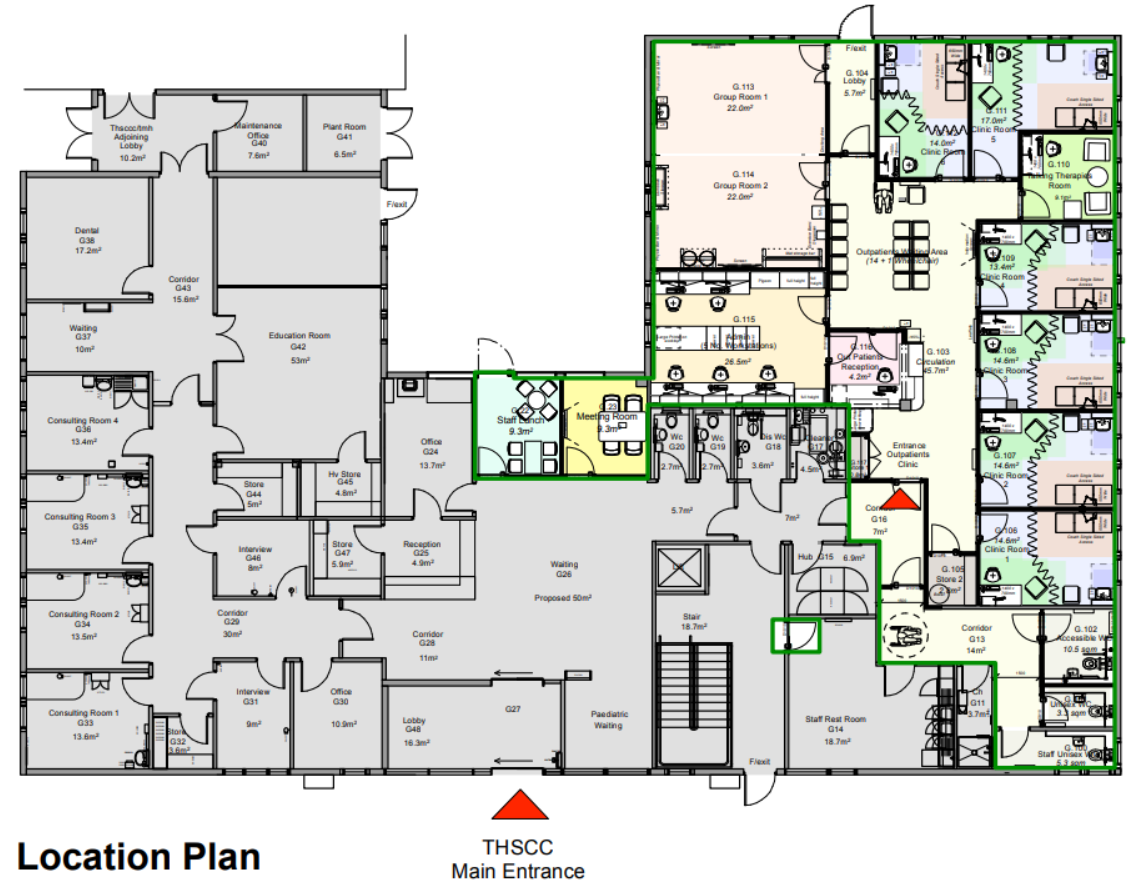
Kingston Hospital
NHS Foundation Trust

Teddington Health and Social Care Centre

Outpatient Facility Development
October 2024 Update

Introduction

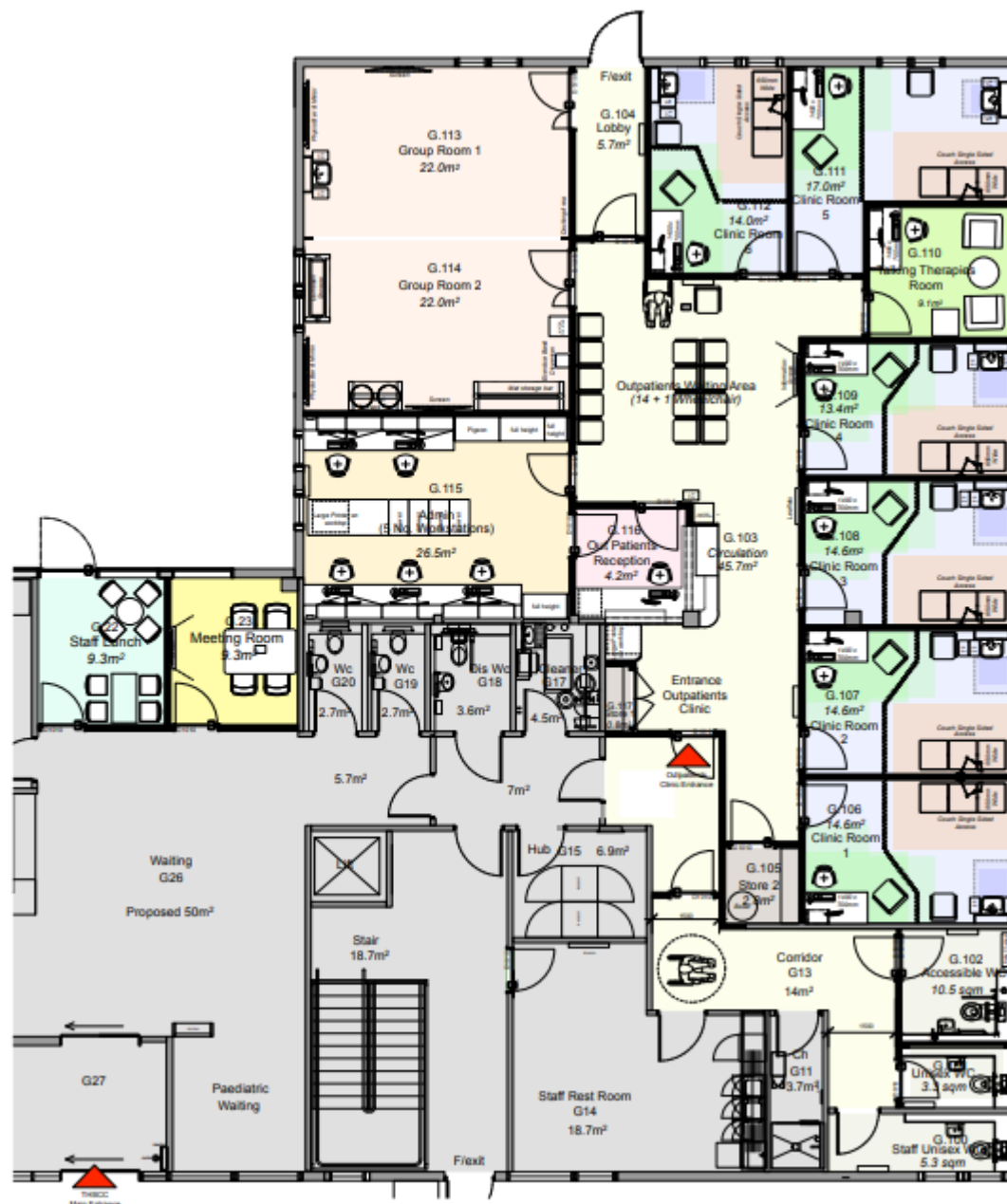
1. Introduction – who I am and what is my role
2. Why are we doing this project what are the drivers– available space post covid, clinical strategy, cost efficiency, patient access
3. How do we put a project together – design , and tender, ongoing management etc 40% of total project costs are things other than construction
4. How do we get things funded, business cases, timeframes , PDC, / central funding and charity support
5. Who is involved –
 1. Studio 4 Architects and project managers–
 2. Storm Building Ltd , - construction
 3. Ross and Partners structural engineers
 4. Bianco Sale Mechanical and Electrical Engineers



Layout

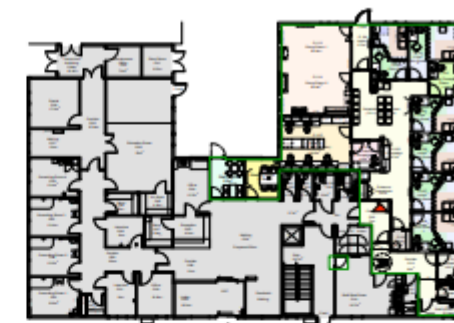
What problems we have encountered:

- no as built plans,
- air handling regulation,
- new water safety regulation,
- asbestos,
- working with the local council,
- operational disruption to the hospital and local residents



Teddington Outpatients Clinic - 17th September 2024

PROPOSED PLAN



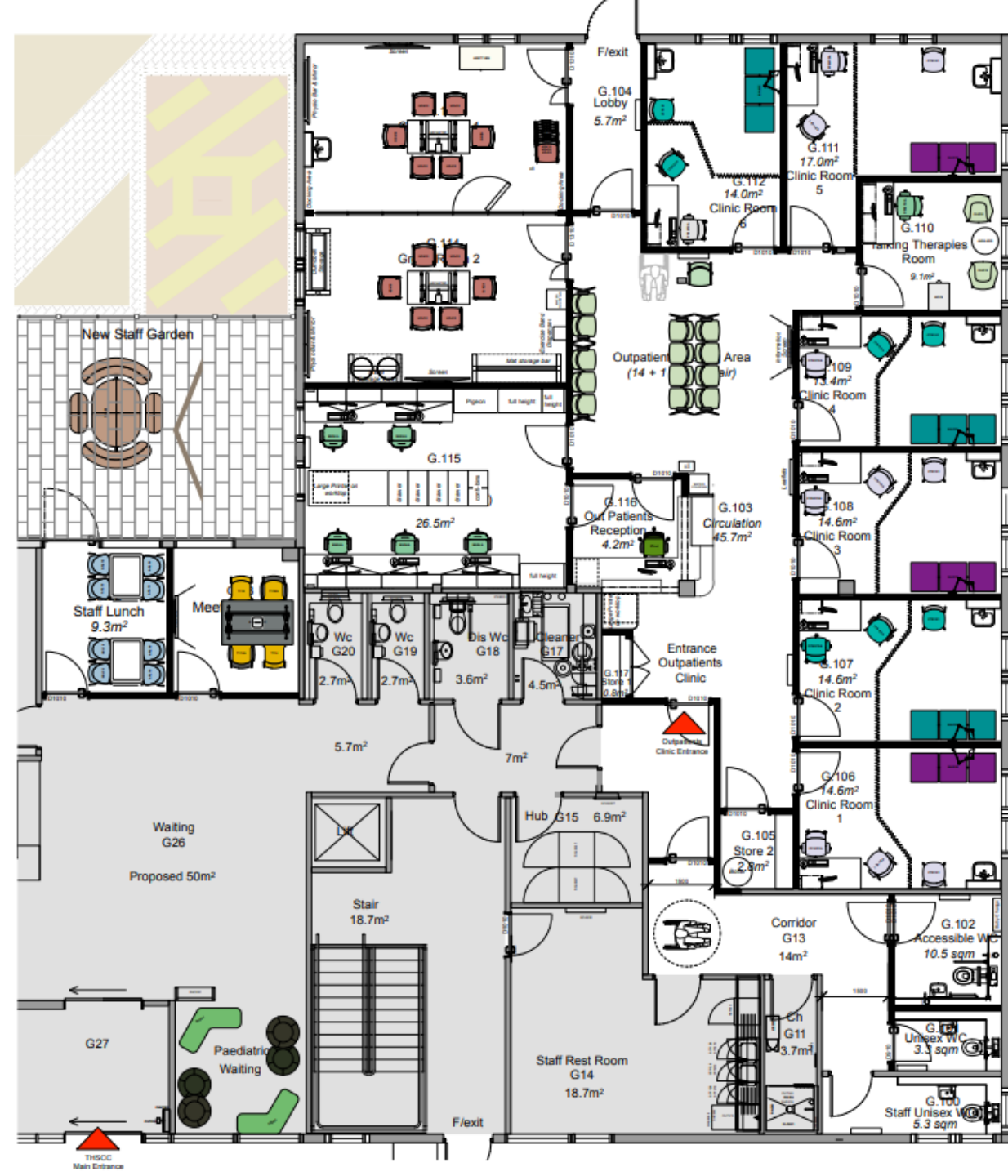
Location Plan

LEGEND

- Outpatients Clinic Reception
- Outpatients Clinic Circulation & Sub Wait Area
- Clinic Room with WHB
- Talking therapies only, No WHB
- Group Room With WHB
- Admin Space
- WC's
- Stores
- Staff Lunch Room
- Meeting room
- Shared Corridors
- Proposed Partitions
- Existing Partitions
- Area Outside Project Scope

Room Content

- Generic room design
- Hospital Technical Memoranda
- Flexible design
- Administration support alongside the clinical team
- Separation of adults and children
- Group room for meetings and clinical sessions
- Staff breakout areas
- Enhanced main waiting area



Flooring and wall protection

Teddington Outpatients Clinic - 17th October 2024

FLOORING



WAITING AREA / CIRCULATION / STAFF AREAS CLINIC ROOM & TALKING THERAPIES ROOM



Description: Wood effect finish with grey border for covered skirting
 Wood Effect Colour:
 Product Range: Polyflor Wood FX PUR
 Product Colour Reference: 3394 Newport Oak
 Light Reflectance Value: 30
 Border colour:
 Product Range: Polysafe Verona PUR Range, PURE COLOURS
 Product Colour Reference: 5233 Pebble Shore
 Light Reflectance Value: 21

CORRIDOR G16 & STORES



Product Range: Polysafe Verona PUR Range, PURE COLOURS
 Product Colour Reference: 5233 Pebble Shore
 Light Reflectance Value: 21

WC's & CORRIDOR G13



Slip resistant vinyl with covered skirting
 Polysafe Verona PUR Range
 Colour : 5207 Nightfall to match existing

* CORNER GUARDS

Red stars denote where corner guards will be installed
 Colour: Flint (mid grey) to co-ordinate with doors and provide suitable visual contrast.



Example Rub Rail: Flint Finish

--- RUB RAILS

Blue dash denotes areas of wall with rub rails for protection against furniture
 Colour: Flint to co-ordinate with doors.

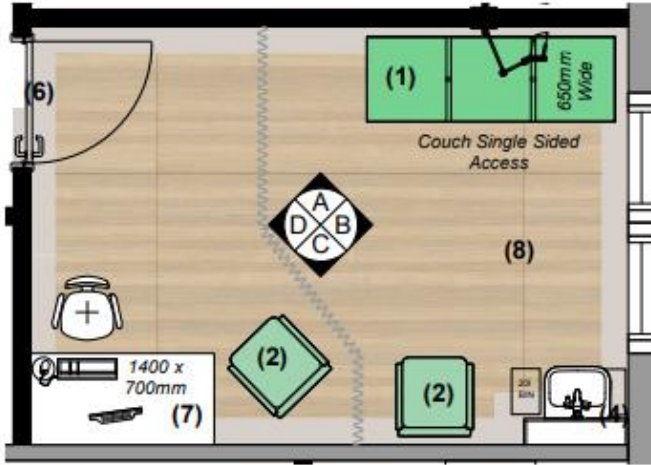


Example Rub Rail: Flint Finish

Clinic Room Layout

NEUTRAL (For flexibility with Art & Furniture Upholstery)

TYPICAL CLINIC ROOM



PLAN



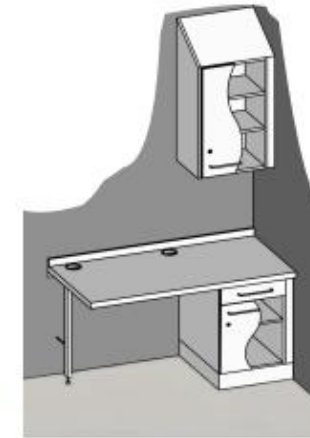
WALL PROTECTION (9)

Colour: Chalk



FLOORING (8)

Product Range: Polyflor Wood FX PUR
timber effect 3394 Newport Oak with border
colour to cover skirting product Colour
Reference:5233 Pebble Shore



JOINERY (7)

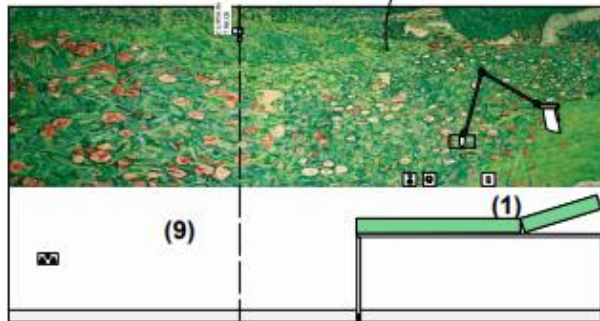
White
Ref: A-1001



DOORS (6)

Chalk Door Leves
Flint Door Frames

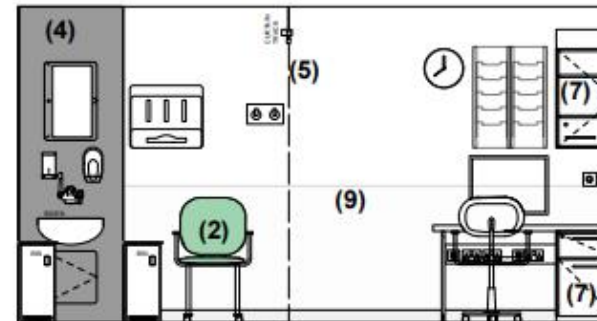
Indicative Art Work / Graphic



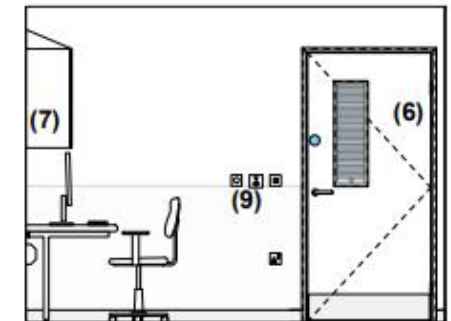
ELEVATION A



ELEVATION B



ELEVATION C

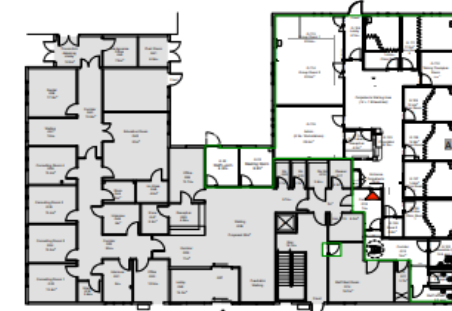
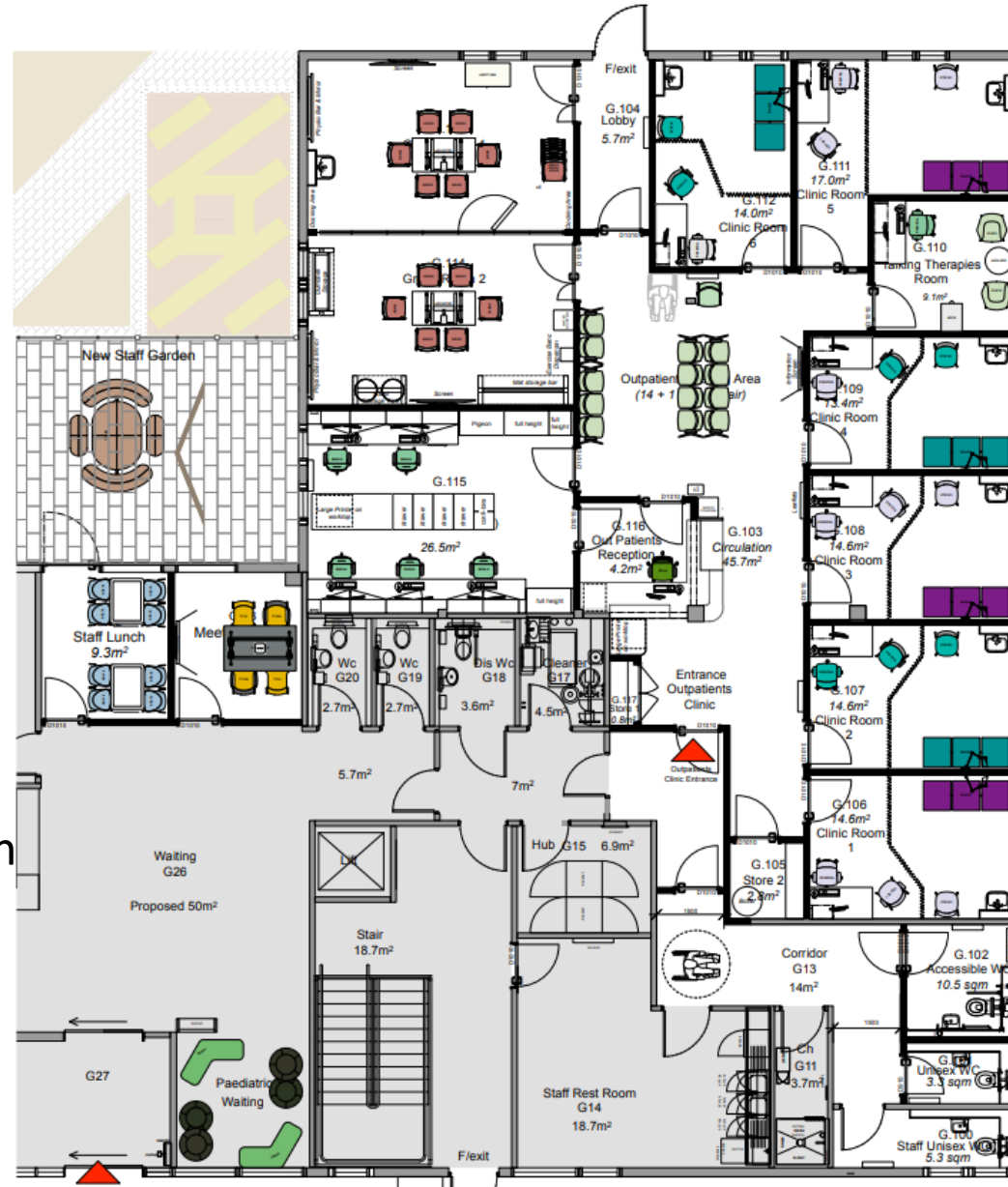


ELEVATION D

Furniture

Teddington Outpatients Clinic - 17th October 2024

PROPOSED FURNITURE PLAN



Location Plan

Furniture Key

Colours Vary on Plan- Refer also to Item Codes

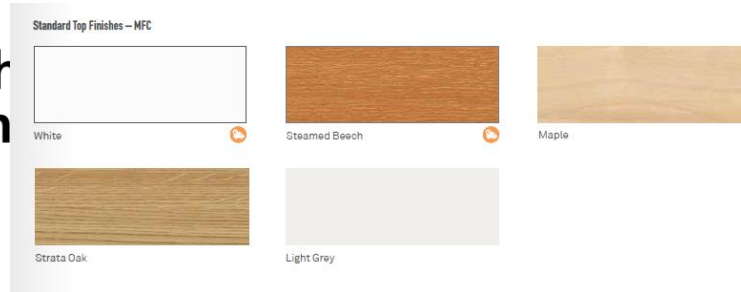
Item Code	Item Name	Item Image
CONOP-001	CONOP-001	
SEDA	SEDA	
PHOSFOA	PHOSFOA	
ASSEM-002	ASSEM-002	
CLATO	CLATO	
PHOSFOA	PHOSFOA	
ADCE	ADCE	
CRS-ASSEA	CRS-ASSEA	
CRS-ASSEA	CRS-ASSEA	
CRS3	CRS3	
BAOOS	BAOOS	
CTW01	CTW01	
CTW02A	CTW02A	
ASSET-004	ASSET-004	
ARCH-001	ARCH-001	
HEATO	HEATO	
ASL-10	ASL-10	
PHOSFOA-TMPC-PHKA	PHOSFOA-TMPC-PHKA	
PHOSFOA-TMPC-PHKA	PHOSFOA-TMPC-PHKA	
SOLO-PHAB-004	SOLO-PHAB-004	
Y08	Y08	
Y10A	Y10A	
ALP-001	ALP-001	
ALP-002	ALP-002	
ALP-003	ALP-003	
ALP-004	ALP-004	
ALP-005	ALP-005	
ALP-006	ALP-006	
ALP-007	ALP-007	
ALP-008	ALP-008	
ALP-009	ALP-009	
ALP-010	ALP-010	
ALP-011	ALP-011	
ALP-012	ALP-012	
ALP-013	ALP-013	
ALP-014	ALP-014	
ALP-015	ALP-015	
ALP-016	ALP-016	
ALP-017	ALP-017	
ALP-018	ALP-018	
ALP-019	ALP-019	
ALP-020	ALP-020	
ALP-021	ALP-021	
ALP-022	ALP-022	
ALP-023	ALP-023	
ALP-024	ALP-024	
ALP-025	ALP-025	
ALP-026	ALP-026	
ALP-027	ALP-027	
ALP-028	ALP-028	
ALP-029	ALP-029	
ALP-030	ALP-030	
ALP-031	ALP-031	
ALP-032	ALP-032	
ALP-033	ALP-033	
ALP-034	ALP-034	
ALP-035	ALP-035	
ALP-036	ALP-036	
ALP-037	ALP-037	
ALP-038	ALP-038	
ALP-039	ALP-039	
ALP-040	ALP-040	
ALP-041	ALP-041	
ALP-042	ALP-042	
ALP-043	ALP-043	
ALP-044	ALP-044	
ALP-045	ALP-045	
ALP-046	ALP-046	
ALP-047	ALP-047	
ALP-048	ALP-048	
ALP-049	ALP-049	
ALP-050	ALP-050	

An opportunity to introduce colour and more unique design while being cognisant of infection control measures, manual handling and health & safety requirements.

Room: Admin Office G.115



ich
lth



Item Description: NP Tall underdesk pedestal

Items Details: 330mm Wide, Lock

Finish Options: As above, White / Steamed Beech / Maple / Strata Oak / Light Grey

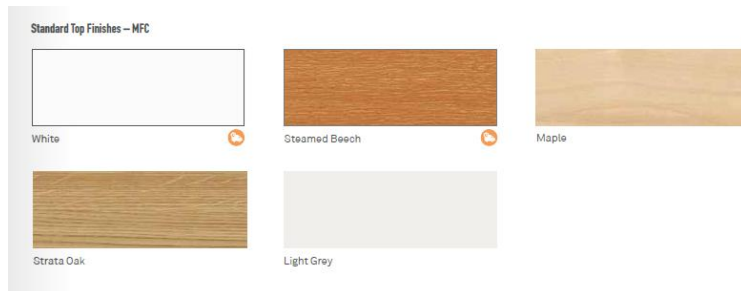
Kir



Item Description: MERCURY M60HA Task chair

Fabric Finish Options: colours from Cadet Zest or Agua Linen Vinyl's

Room: Reception G.116



Item Description: NP Tall underdesk pedestal

Items Details: 330mm Wide, Lock

Finish Options: As above, White / Steamed Beech / Maple / Strata Oak / Light Grey



Item Description: Pluto Mesh PPM90FDA Task chair

Fabric Finish Options: colours from Cadet Zest or Agua Linen Vinyl's

Room: Talking Therapies G.110

Item Description: Conic A636-6RD Coffee Table

Finish Options: Chrome Frame Legs

Table top: As adjacent –

Carini Walnut/ Autumn/ / Strata Oak / Urban Maple /

Highland Oak /Beech / Winter Oak / White / Light Grey / Denim / Clay



Item Description: Clara CLR60 Chairs

Leg Finish Options: Oak or Black Ash timber as below

Fabric Finish Options: colours from Cadet Zest or Agua Linen Vinyl's



Item Description: Pluto PPM80FDA Task chair

Fabric Finish Options: colours from Cadet Zest or Agua Linen Vinyl's

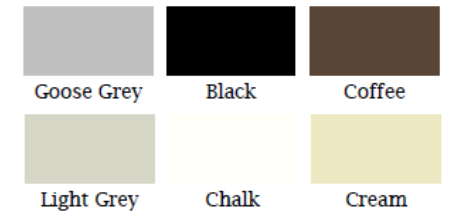


Item Description: Bisley Filing Cabinet

Colour Options: As below, Goose Grey, Black, Coffe, Light grey, chalk, cream



Popular Finishes



Bisley Colour Options

Please see next page for
alternative comfy chair options

Room: Talking Therapies G.110 – Alternative Comfy Chair Options



Bastille



Famiglia



Barolo



Urku



Harriet

Fabric Finish Options: Colours from Cadet
Zest or Agua Linen Vinyl's

Room: Waiting Area G.103

Core Beam



Item Description: Core Beam

Leg Finish: Grey, as per photo

Fabric Finish Options: Seat and back pad colours from Cadet Zest or Agua Linen Vinyl's



Item Description: Wall Mounted leaflet rack

6 No. A4 Pockets

Finish Options: tbc by BHC

Room: Clinic Rooms Patient Seating



Available in Black, Pistachio, Navy, Orange Crush and Crayon Grey,

Item Description:

CONTOUR CTR101 (No arms)

CONTOUR CTR101A (With arms)

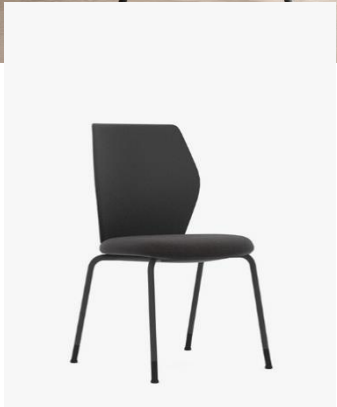
Plastic Back Finish: As per photo Black / Pistachio / Navy / Orange Crush / Crayon Grey

Fabric Finish Options Seat and back pad: Colours from Cadet Zest or Agua Linen Vinyl's

Each Clinic Room with have 2 patients chairs:

1 with arms

1 without arms



Room: Clinic Rooms Patient Couch & Leaflet Dispenser



Item Description: MEDIPLINTH BAO3E 3 section electronic plinth

Leg Finish: White as per photo

Fabric Finish Options: Just Colour Swatch only



Item Description: Wall Mounted leaflet rack S379899

4 No. A4 Pockets (There will be 2 No. above the desk in each Clinic Room)

Finish Options: Black or Silver

Room: Group Room 2

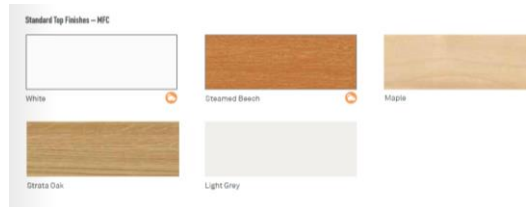
Item Description: ELIOS HD410 Stackable chairs

Plastic Back Finish: Black as per photo
Seat Pad Fabric Finish Options: Cadet Zest or Agua Linen Vinyl's



Item Description: S7ST Tambour Storage Unit

Finish Options: As below, White / Steamed Beech / Maple / Strata Oak / Light Grey



Item Description: ARRAY AR11407RCFLIP Folding Table

Finish Options: Frame Legs Black as shown

Table top: As below –

Carini Walnut/Autumn/ Strata Oak / Urban Maple / Highland oak/ Beech / Winter Oak / White / Light Grey / Denim / Clay



Room: Staff Room G.22



Item Description: FORTYSEVEN RANGE FRSD1007RC Dining Table

Finish Options: Frame Legs black as shown

Table top: As adjacent –

Carini Walnut/Autumn/ Strata Oak / Urban Maple /
Highland oak/ Beech / Winter Oak / White / Light
Grey / Denim / Clay



SHELL FINISHES



Item Description: ARLO ARL10 Lunch room chairs

Finish Options: Legs Black or white

Plastic Shell: As shown , Gravel / Seafoam /
Mist / Flame / Cloud / Sunshine / Arctic

Room: Meeting Room G.23



Item Description:

TRILLIPSE T114-T114 (Chair Without arms)

TRILLIPSE T114-T114A (Chair With arms)

Leg Finish: As per photo Black

Fabric Finish Options Seat and back pad: Colours from
Cadet Zest or Agua Linen Vinyl's

**Meeting room to have 2 chairs with arms and 2 chairs
without arms**



Item Description: AD-LIB AL1610RC Meeting Room Table

Finish Options: Frame Legs Black as shown

Table top: As above –

Carini Walnut/Autumn/ Strata Oak / Urban Maple / Highland oak/ Beech / Winter Oak / White / Light Grey / Denim / Clay

Room: Paediatric Waiting Area - For Discussion at Meeting



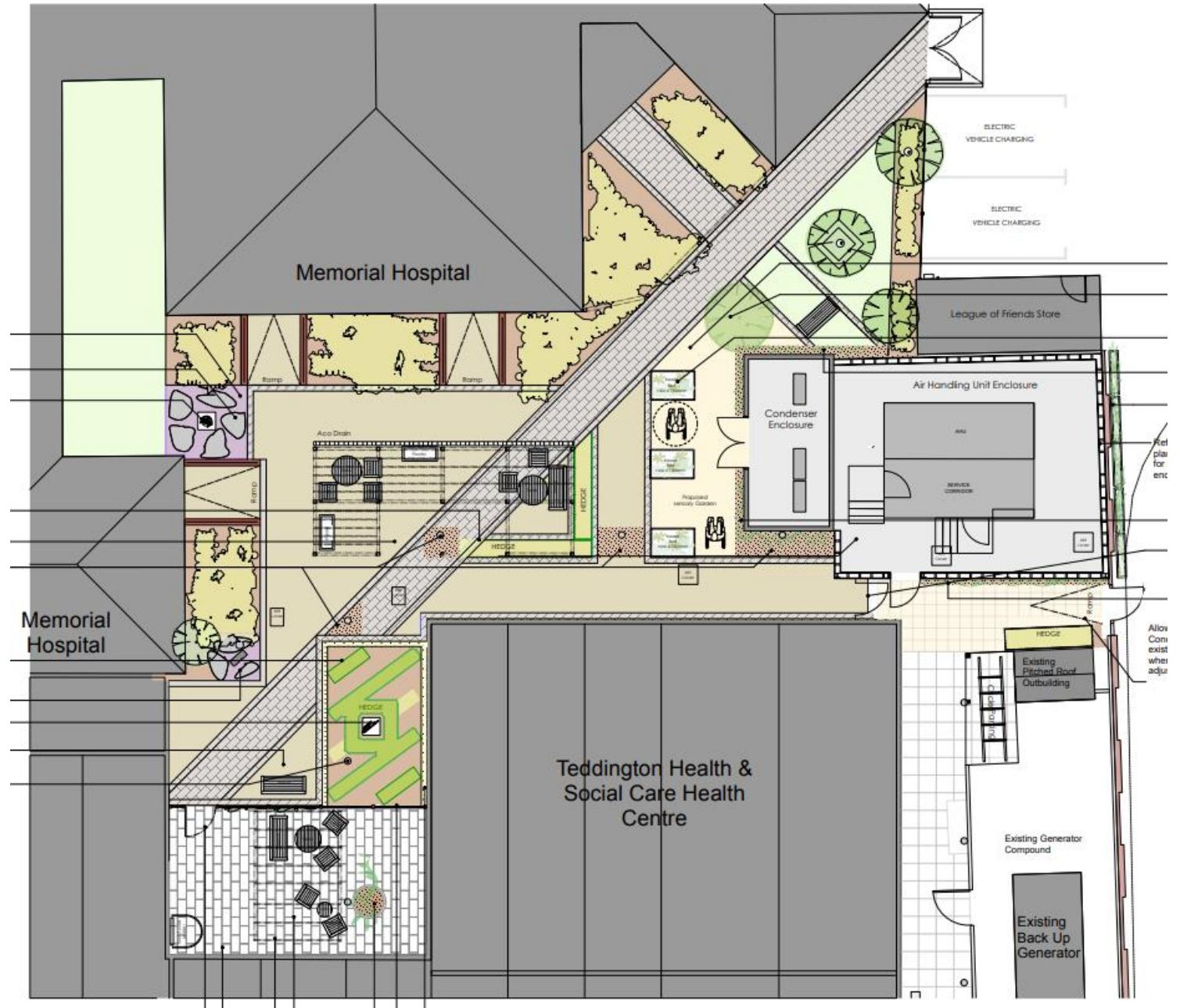
PEBBLE



VERGE Colours from Cadet Zest or Agua Linen Vinyl's

Garden

- Replanting
- Improved access
- Colonnade
- Plant screening
- Staff area



Staff external space

Item Description: TIBO

18 mm Tabletop and seats in Teak



Completion

- Practical completion scheduled for mid February
- 1 month commissioning and testing
- Move service over in April from Queen Mary's Roehampton

Key risks are contractor ability to co-ordinate contractors with the external works and the provision of the electrical supply by the council.

Next steps:

1. Choose furniture and paint colours
2. Plan out artwork and potential links to room naming
3. Workup the detail for the garden planting
4. Finalise the budget (66k currently firmed up)

Questions?

